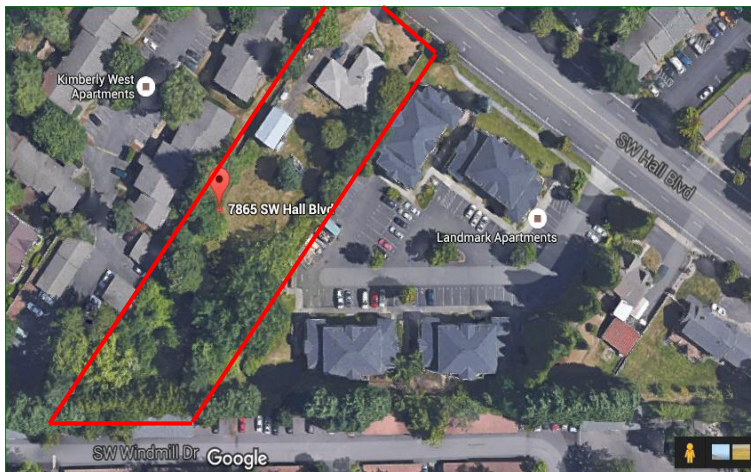
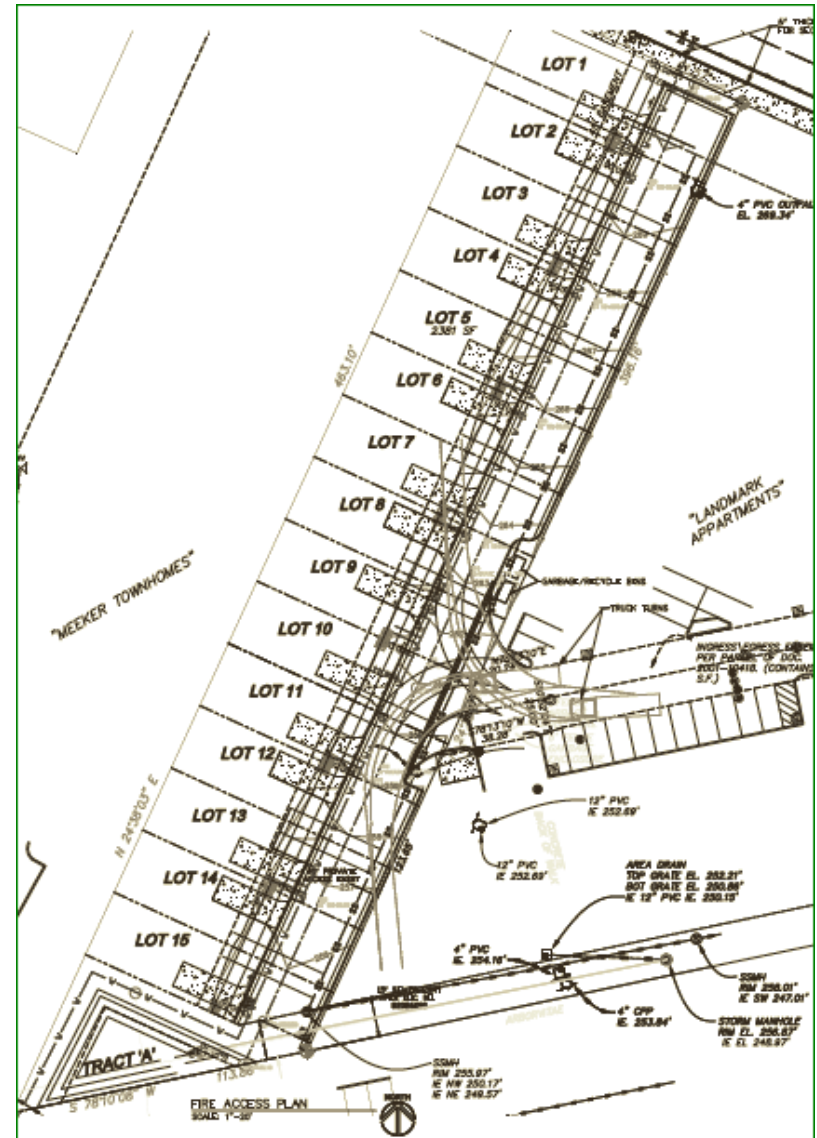


Project: Hall Blvd (aka Tesla Terrace)
Type: Subdivision (15 lots)
Address: 7865 SW Hall Blvd, Beaverton, OR 97008
Location: South Beaverton

Simon Lofts
Sustainable Infill Development, LLC
971-300-6562 | simonfromsid@gmail.com

Project Description

One acre parcel of land in a popular South Beaverton neighborhood within easy walking distance of Washington Square Mall, Redtail Golf Course and several parks meandering down Fanno Creek. Bus stop right outside on Hall Blvd. Max and highway (OR-217) access very nearby. Existing house/shed on site to be removed. Application submitted for a 15-lot subdivision per rendering for single-family 3 bed, 3.5 bath 20 ft-wide detached homes c. 1,600 livable space with potential ADU under. Example builds are shown on pages 2 & 3. Lots mostly c. 92ft x 26 ft (c. 2,400 sq ft) will include private street and sidewalk at front of houses (included in total lot size calculation), parking space for 2-3 cars per house and quiet access through Landmark apartment Hall Blvd exit. Expect to be builder-house-permit-ready with all utilities stubbed for hook-up on each lot by September 2016.



Potential style of house

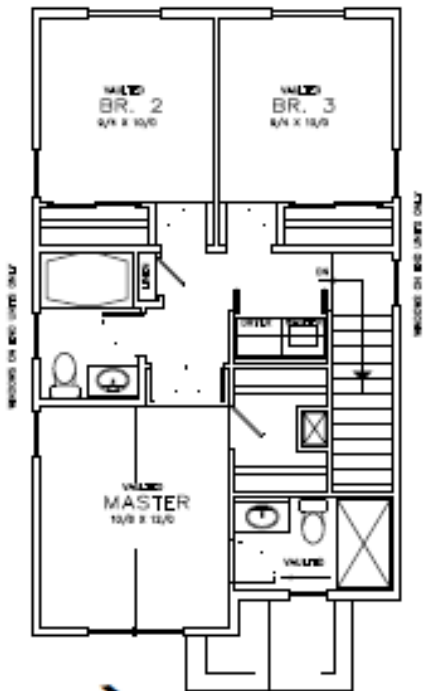


Potential layout of house

UPPER FLOOR PLAN

SCALE 1/8" = 1'-0"

662 S.F.

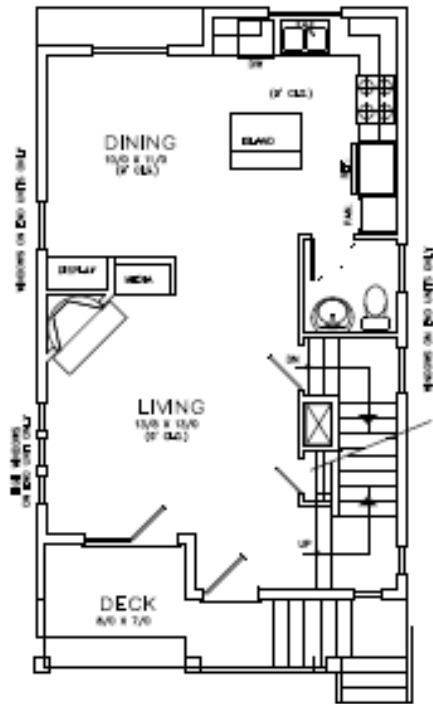


10

MAIN FLOOR PLAN

SCALE 1/8" = 1'-0"

625 S.F.

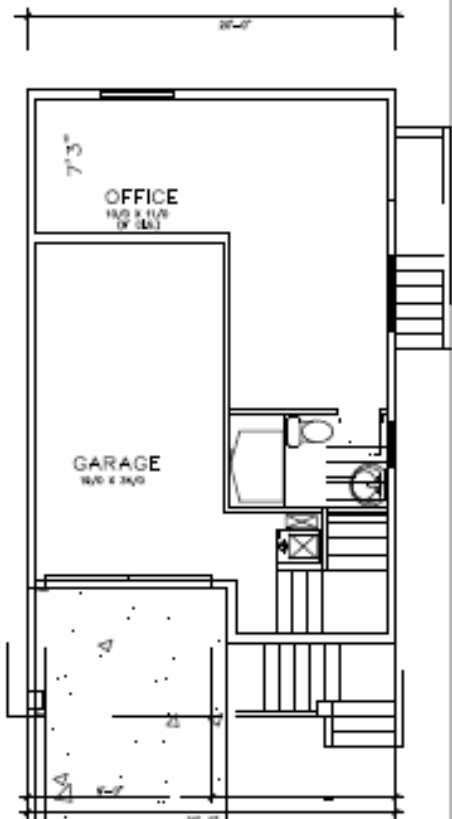


6

LOWER FLOOR PLAN

SCALE 1/8" = 1'-0"

364 S.F.



8