

Project: 17th Ave
Type: 4 lot Subdivision
Address: 1329 17th Ave, Hillsboro, OR 97124
Location: Hillsboro
Timing: 8-12 months
Title: Stewart (Fe Bates)

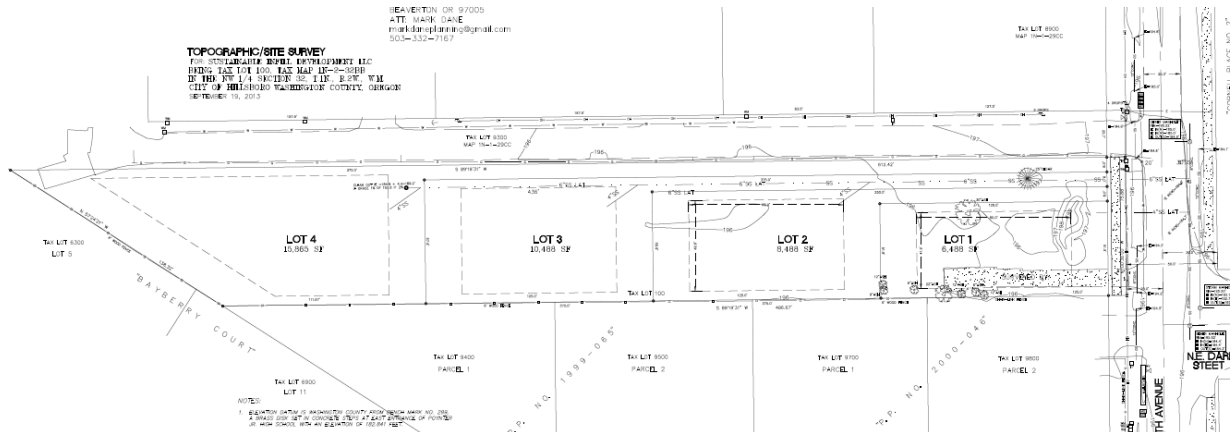
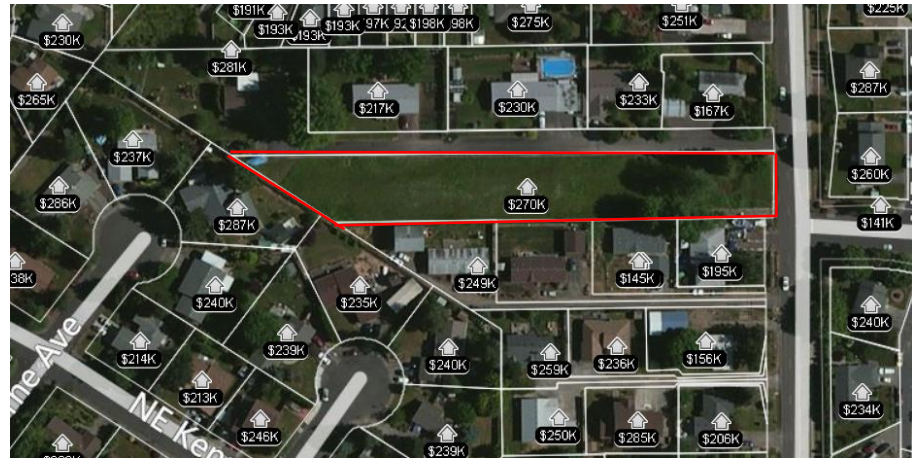


Project Description

0.97acre (c.42,000sqft) parcel of land in Hillsboro, recently ranked 10th Hottest Neighborhood by the Portland Business Journal in the Metro region. R5 zoning allows for 4 large (>10,000sqft) lots for >2,000sqft single-dwelling homes to be built on a triple flag. Site plan below calls out lot sizes, access easements, and maximum building envelopes for each lot. Lots will include utilities & frontage improvements on 17th Ave with laterals and private road along the north side. SID will sell at preliminary approval/engineering approval stage or after construction of improvements and recording of final plat.

Milestone	Done/Due	Timing/Progress as of 10/08/14
Planning Application Submittal:	✓	<div style="width: 100%; height: 15px; background-color: green;"></div>
Application completeness:	✓	<div style="width: 100%; height: 15px; background-color: green;"></div>
Prelim approval/conditions:	✓	<div style="width: 100%; height: 15px; background-color: green;"></div>
Engineering drawings/permits/bond:	11/15	<div style="width: 75%; height: 15px; background-color: green;"></div>
Construction finish/sign-off:	11/15	<div style="width: 0%; height: 15px; background-color: white;"></div>
Plat drawn/recorded:	11/15	<div style="width: 75%; height: 15px; background-color: green;"></div>

Completed



For information:
 Simon Lofts
 Sustainable Infill Development, LLC
 971-300-6562
 sustinfilldevllc@gmail.com