

# **Sustainable Infill Development, LLC**

**2930 SW 178th Ave  
Beaverton  
OR 97006**

**aka Raleighs Garden**

**Before, during and after  
photos**

**Simon Lofts  
971-300-6562  
simonfromsid@gmail.com**

Before



After





# During Construction – 178<sup>th</sup> Ave





## During Construction-176<sup>th</sup> Ave



## After Construction – 176<sup>th</sup> Ave



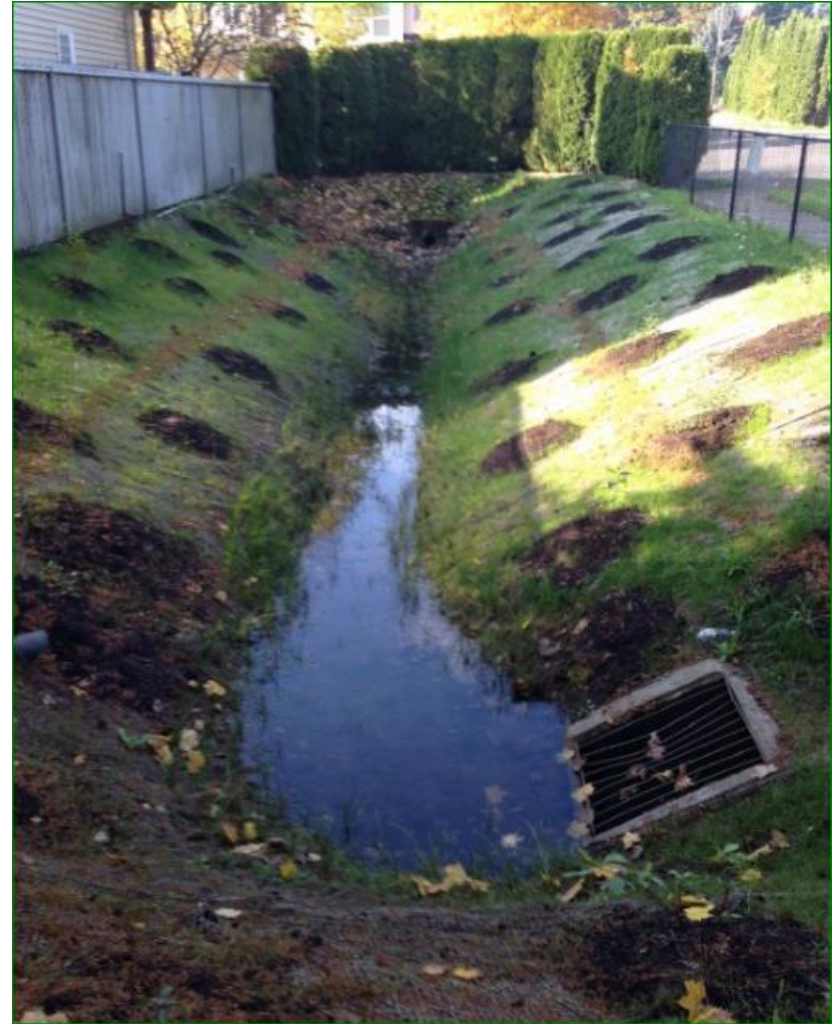


## During Construction – onsite private street





## During Construction – offsite Water Quality Facility



After Construction – WQF













# Houses under construction by Chad E Davis Construction Inc



✎ Add a caption





**Houses near completion**









